

# HOUSTON



**42<sup>nd</sup> PCA General Assembly**  
**Houston, Texas • June 16-20, 2014**





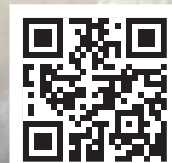
# Does your church set aside time to **SEEK THE LORD FOR SPIRITUAL RENEWAL?**

When God pours out His power, everything changes, with real and lasting transformation—the kind of transformation that leads to . . .

- *Christians seeking God personally like never before*
- *Effectual prayer for the salvation of the lost and the outpouring of the Holy Spirit*
- *The fulfillment of the Great Commission*

A Life Action Summit gives your entire church family the opportunity to seek the Lord together. Our summits provide a one-of-a-kind experience of reconnecting with God and transforming relationships.

## Visit the Life Action booth at the General Assembly



[www.LifeAction.org/Summit](http://www.LifeAction.org/Summit)

Life Action Revival summits are an outreach of Life Action Ministries  
©2013 Life Action Ministries. All rights reserved.

*Calling God's people  
to God's presence*

Life Action **Revival**   
**summit**

# Welcome to the 2014 General Assembly



## Welcome from the Administrative Committee

Welcome to the 42nd PCA General Assembly, meeting in Houston, Texas! As we gather in this truly international city, we remember our Lord's parting instructions to His disciples to go to all the nations, preaching and teaching the gospel. Our host presbyteries, Houston Metro and Korean Southern, are calling us to *"Proclaim Christ, Disciple the Nations,"* a theme particularly appropriate for this great metropolitan area in which 70 different countries are officially represented.

How thankful we are that Christ's final words were accompanied by His assurance that all authority in heaven and on earth belongs to Him, and by His promise that He is with us always, even to the end of the age! Therein we find the confidence and enabling power to obey his command and do our part to accomplish the task.

Over the forty years of our denominational life, God has richly blessed the PCA as we have sought to remain faithful to the Scriptures, preach the gospel to the lost, and teach the whole counsel of God to His redeemed people. Let us pray that as we meet to conduct the church's business and as we worship and fellowship together, our presence will be a blessing that spills out to the Houston community and bears witness to the truth, life, and love found in the Lord Jesus Christ.

Our annual gathering as an Assembly is vital to our strength and growth as a branch of Christ's church. As a body we transact ecclesiastical business, deal with significant theological issues, review the past year's ministry, and consider how we can best move forward in service to our Lord. We will be discussing important matters and making decisions that affect your church and our denomination as a whole. I encourage you to participate actively!

Working and worshipping together face-to-face with brothers and sisters in Christ from outside our own spheres of ministry brings the opportunity for encouragement, understanding, giving, and learning. Throughout the week, our worship, fellowship, and prayer times together set the tone and foundation for our business. A wide variety of seminars offer personal and professional enrichment as well as opportunities for networking and exploring resources for ministry.

Let us joyfully and confidently come together, united in our purpose to proclaim repentance and forgiveness of sins in Christ's name to all the nations. As we prayerfully conduct our church's business, may we seek the wisdom that is from above, guard the truth of the gospel, bear one another's burdens, and speak the truth in love.

We are delighted that you and your family will be joining us in Houston for church business, worship, and fellowship.

A handwritten signature in blue ink that reads "L. Roy Taylor". The signature is fluid and cursive.

Dr. L. Roy Taylor  
Stated Clerk of the General Assembly





# PREPARING GENERATIONS OF LEADERS

Equipping the church of 2025. Today.

**SCHOLARSHIPS**  
\$2 MILLION  
awarded annually

**DEDICATED SCHOLARSHIPS**  
Covenant College, MTW,  
RUF, and Campus Ministries





# GA ION ERS

## ENHANCED CURRICULUM

- Mentored and ministry-focused MDiv
- The Francis A. Schaeffer Institute
- The City Ministry Initiative

## STRATEGIC LOCATION

- 1-on-1 access to all faculty in one location
- 20+ full-time pastor/scholars
- 30+ PCA churches in the St. Louis area
- Lowest cost of living of the top 20 cities in the United States

[www.covenantseminary.edu](http://www.covenantseminary.edu)

COVENANT  
THEOLOGICAL  SEMINARY



# Welcome from the Local Presbyteries

## Welcome from the Houston Metro and Korean Southern Presbyteries Host Committee



Danny McDaniel  
Host Committee Chair

To all of the Commissioners and their families,

Welcome to Houston! Houston Metro Presbytery and Korean Southern Presbytery count it a great privilege to welcome the PCA to America's fourth largest city.

Houston is a city with a diverse population and economic dealings throughout the world. Almost twenty-five percent of our residents were not born in the United States, and 70 different countries maintain consulates in the Houston metropolitan area. Because so many nations are represented in Houston, we chose "*Proclaim Christ, Disciple the Nations*" as the theme for the 42nd General Assembly.

We pray that our Covenant God will glorify Himself as we offer our labors of love to Christ and His Church during this General Assembly. And we pray that Christ will bless us with a sense of purpose and unity.

We also pray that you and your family will enjoy your time in Houston and be refreshed. As you worship at one of our area churches, shop, visit NASA, or enjoy time spent with friends and family at museums and other attractions, we will be ready to assist you.

We look forward to seeing you in Houston!

*42nd GA Host Committee*

Danny McDaniel, Chair

Kyle Bobos, Daryl Brister, Brad DeLoach, Clay Holland, Tom Kelley,  
Eric Priest, Duncan Rankin, Young Song

## Many Thanks to the Host Committee

We are grateful to the members of the 2014 General Assembly Host Committee for their long hours of hard work in planning and carrying out the General Assembly in Houston, Texas this year.

May God be glorified, and may each one who contributed be blessed abundantly.





# Table of Contents



**Travel** Information..... 7

**Hotels** and Housing..... 10

Houston **Maps** ..... 12

General Assembly **Schedule**..... 14



**Hilton Americas Meeting Spaces** Layouts ..... 18

Houston **Attractions**..... 21

Worship **Speakers** ..... 23

**List of Local PCA Churches**..... 24



**Women, Family & Youth** Activities..... 29

Women's **Schedule** ..... 34

**Youth & Elementary** Schedule..... 35

Women and Family **Registration**..... 36

**Forms** Health / Permission / Release ..... 38

Images courtesy Greater Houston CVB

## Many Thanks to our Advertisers!

African Bible Colleges  
Atlantic Coast Communications  
Belhaven University  
byFaith Magazine  
CCEF  
Crown & Covenant Publishing  
English Language Institute/China  
Equipping Leaders International  
Erskine College & Seminary  
Five More Talents  
Great Commission Publications  
Harvest USA

Highland Theological College  
Home Repairs Ministries  
Institute for Creation Research  
Life Action Revival Ministries  
MATs International  
Metokos Ministries  
Oakland Collegiate School  
One Story Ministries  
PCA Administrative Committee  
PCA Covenant College  
PCA Covenant Theological Seminary

PCA Foundation  
PCA MNA Disaster Response  
PCA Reformed University Ministries  
Pearl Ministries  
Pioneer Clubs  
Providence Christian College  
Reformed Presbyterian Theological Seminary  
Reformed Theological Seminary  
Stewardship Technology  
Third Millennium Ministries





## COVENANT COLLEGE

The mission of Covenant College is to explore and express the preeminence of Jesus Christ in all things. We offer the world biblically grounded men and women equipped to live out extraordinary callings in ordinary places.

# CHURCH SCHOLARSHIP PROMISE

The Church Scholarship Promise (CSP) program allows local churches to develop unique financial partnerships with Covenant College to benefit students from their congregations. Any church that gives to the Covenant Fund at the rate of \$10 per communicant member qualifies students from its congregation for a CSP grant of at least 12.8% of full-time tuition upon enrollment at Covenant.

**PARTICIPATE IN A PROGRAM THAT IS BENEFITING OVER A THIRD OF OUR STUDENT BODY THIS YEAR.**

**C O V E N A N T . E D U / C S P**



# Travel Information

## Travel to Houston

### Arriving by Plane

Houston is served by the Bush Intercontinental Airport (IAH) and the William P. Hobby Airport (HOU). For information on the airports, please visit the Houston CVB website at [VisitHoustonTexas.com/travel-tools](http://VisitHoustonTexas.com/travel-tools). All the General Assembly (GA) business meetings, seminars, and worship services will be held at the Hilton Americas Houston. Nursery and children's events will be held at the connected George R. Brown Convention Center.



### Shuttle Service

- Super Shuttles are available from the airports to the GA hotels for approximately \$20-\$24. Taxis are available for approximately \$27-\$56.
- Free Greenlink buses operate in Downtown Houston Monday through Friday, 6:30 a.m. to 6:30 p.m., about 7-10 minutes apart. The route includes GA Meeting and Hotel locations.

### Arriving by Automobile

Go to **Maps.Google.com** and insert the address for the Hilton Americas Houston: 1600 Lamar, Houston, Texas, 77010. You will be able to obtain directions from any departure point.

### Rental Cars

AVIS has provided the PCA discounted rates for the 2014 General Assembly. For reservations call 1-800-331-1600 or go to [www.Avis.com](http://www.Avis.com) and provide the discount number T121299. For detailed driving directions around Houston, see the Houston CVB travel page at [VisitHoustonTexas.com/travel-tools/](http://VisitHoustonTexas.com/travel-tools/).



### Parking

If you are driving into Houston, see GA hotels for parking fees. Refer to the map on page 12 for information on local parking.





# Houston Convention and Visitors Bureau



Bayou Bend, the former home of Houston philanthropist Ima Hogg, now houses the Museum of Fine Arts, Houston's early American decorative arts and painting collection.

Courtesy Greater Houston CVB

## Explore Houston!

America's fourth largest city is a cosmopolitan destination, filled with world-class dining, arts, hotels, shopping and nightlife. Take a stroll through the historic Heights, spend the day exploring the Museum District or head down to Space Center Houston. Later on, grab a bite in one of dozens of award-winning restaurants, or hang out with the cool kids on Washington Avenue. There's always something to do in this "Southern hospitality meets urban chic" city. Come explore Houston!



## VisitHoustonTexas.com



# Welcome from the Greater Houston CVB



## Welcome to Houston!

The Greater Houston Convention & Visitors Bureau is honored to have the Presbyterian Church in America hold their 42nd General Assembly June 17-20, 2014 in our city.

When you think of Houston, you can rarely come up with one specific image. . .yes, we are rodeo, barbecue and cowboy boots, but we are also NASA and the Johnson Space Center. We are the world's largest Medical Center. Our Theater District is second in size only to New York! Houston's Museum District is recognized as one of the nation's major cultural centers.

We hope that while you are here you will have the opportunity to share in the Houston experience, taking with you lasting impressions of the vitality, spirit, and tradition which characterize our city. The attractions are limitless!

Again, welcome to Houston, and we hope that your visit will be memorable!



Courtesy Greater Houston CVB

Sincerely,

A handwritten signature in black ink that reads "Greg Ortale".

Greg Ortale  
President and CEO  
Greater Houston Convention & Visitors Bureau

Courtesy Greater Houston CVB





# Hotel Information



Courtesy Hilton Americas Houston



Courtesy Hilton Americas Houston



Courtesy Hilton Americas Houston

**HILTON AMERICAS Houston—Headquarters Hotel**  
**1600 Lamar, Houston, Texas 77010** (see location map on page 12)  
**Phone: (713) 739-8000**

**Room Rate:** \$125 plus tax per night for single and double occupancy  
\$135 plus tax per night for triple or quad occupancy

Children under the age of 18 in their parents' room will not be considered an additional room occupant and will not be charged the extra person fee.

**Reservation Methods:**

Online: <https://resweb.passkey.com/go/PCA2014HoustonTX>

Call: 800-236-2905; Group Name: Presbyterian Church in America

Room rates will be honored for attendees three (3) days before group arrival and three (3) days after group departure based on availability.

**Deposit:** Individuals will be required to provide one night's deposit to guarantee their reservation. Checks and major credit cards are accepted for deposit.

**Cancellation Fee:** The first night's deposit will be refunded for reservations cancelled before 12 midnight, Thursday, June 12.

**Early Departure Fee:** Departure dates are confirmed at check-in and are subject to a fee of \$75 if changed after the check-in process is completed.

**No Show Fee:** Any guest who does not show up on the scheduled day of arrival will be charged one night's room and tax. The remaining nights of the stay will also be automatically cancelled.

**Reservation Cut-Off Date: May 22, 2014**

**Check in: 3 pm. Check out: 12 noon**

**Internet:** \$14.95 Internet per day in guest room

**Amenities:** Olympic size infinity pool, health club and spa, and airport transportation

**Parking:** \$18 self park and \$30 valet

**Restaurants:**

**Java Jive @ 1600** – Starbucks coffee, sandwiches, pastries, and snacks

**The Café** – breakfast, lunch and dinner

**In Room Dining** – 24 hours a day

**Lobby Bar**



Courtesy Hilton Americas Houston

# Hotel and Housing Information

## HYATT REGENCY Houston—Overflow Hotel

1200 Louisiana St., Houston, Texas 77002 (see location map on page 12)

Phone: (713) 654-1234

**Room Rate:** \$100 plus tax per night for single and double occupancy  
\$125 plus tax per night for triple or quad occupancy

Children under the age of 18 in their parents' room will not be considered an additional room occupant and will not be charged the extra person fee.

### Reservation Methods:

Online: <https://resweb.passkey.com/go/PCA2014Houston>

Call: 1-888-421-1442 and reference the PCA General Assembly

Room rates will be honored for attendees three (3) days before group arrival and three (3) days after group departure based on availability.

**Deposit:** Individuals will be required to provide a deposit equal to one night's room and tax or guaranteed with a major credit card.

**Cancellation Fee:** Any cancellations without 48-hour advance notice will result in the forfeiture of the one night deposit or charge to the credit card.

**Early Departure Fee:** Departure dates are confirmed at check-in. After check-in, any early departure requests made within 24 hours of departure date will incur one day's room and tax charge.

**No Show Fee:** Any guest who does not show up on the scheduled day of arrival without 48-hour advance notice will result in the forfeiture of the one night deposit or charge to the credit card.

**Reservation Cut-Off Date: May 22, 2014**

**Check in: 3 pm. Check out: 12 noon**

**Internet:** Complimentary guest room Internet

**Amenities:** 24-hour StayFit™ gym, heated outdoor pool, nearby jogging/bike paths

**Parking:** \$15 self park and \$20 valet

### Restaurants:

**Spindletop** – fine dining in revolving restaurant

**Shula's Steakhouse** – breakfast, lunch and dinner

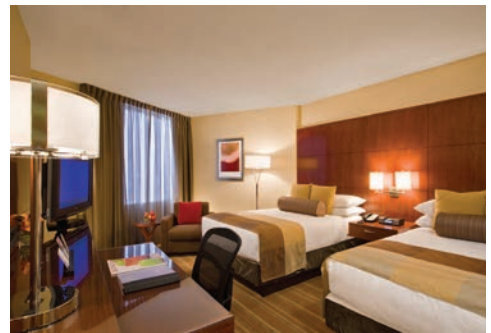
**Einstein Bros. Bagels**



Courtesy Hyatt Regency Houston



Courtesy Hyatt Regency Houston



Courtesy Hyatt Regency Houston

## Dorm Room Housing at Rice University

\$45 single room per person • \$33.50 double room per person

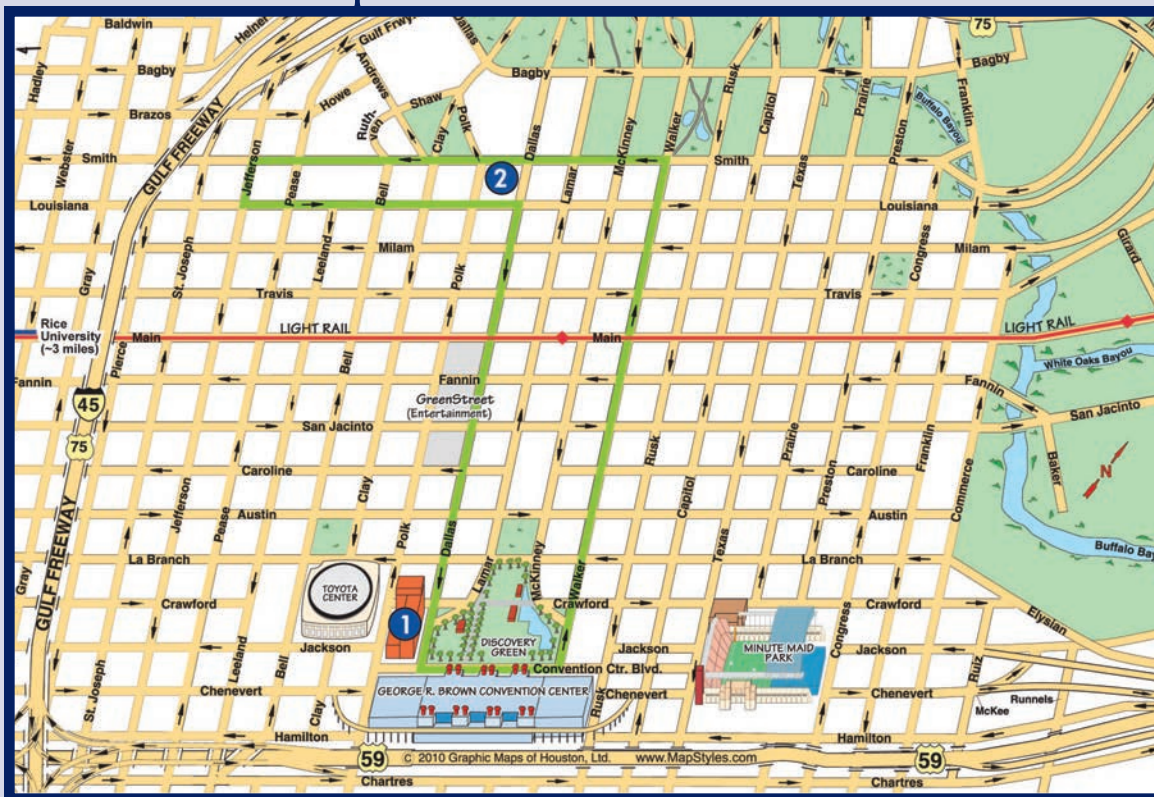
**Reservation cut-off date: May 22, 2014**

Please email Danny McDaniel at [dannymcdaniel1956@att.net](mailto:dannymcdaniel1956@att.net)  
for additional information.

You must pay for your room by check or cash.



# Downtown Map of Houston



1

HILTON AMERICAS  
1600 Lamar  
(713)-739-8000

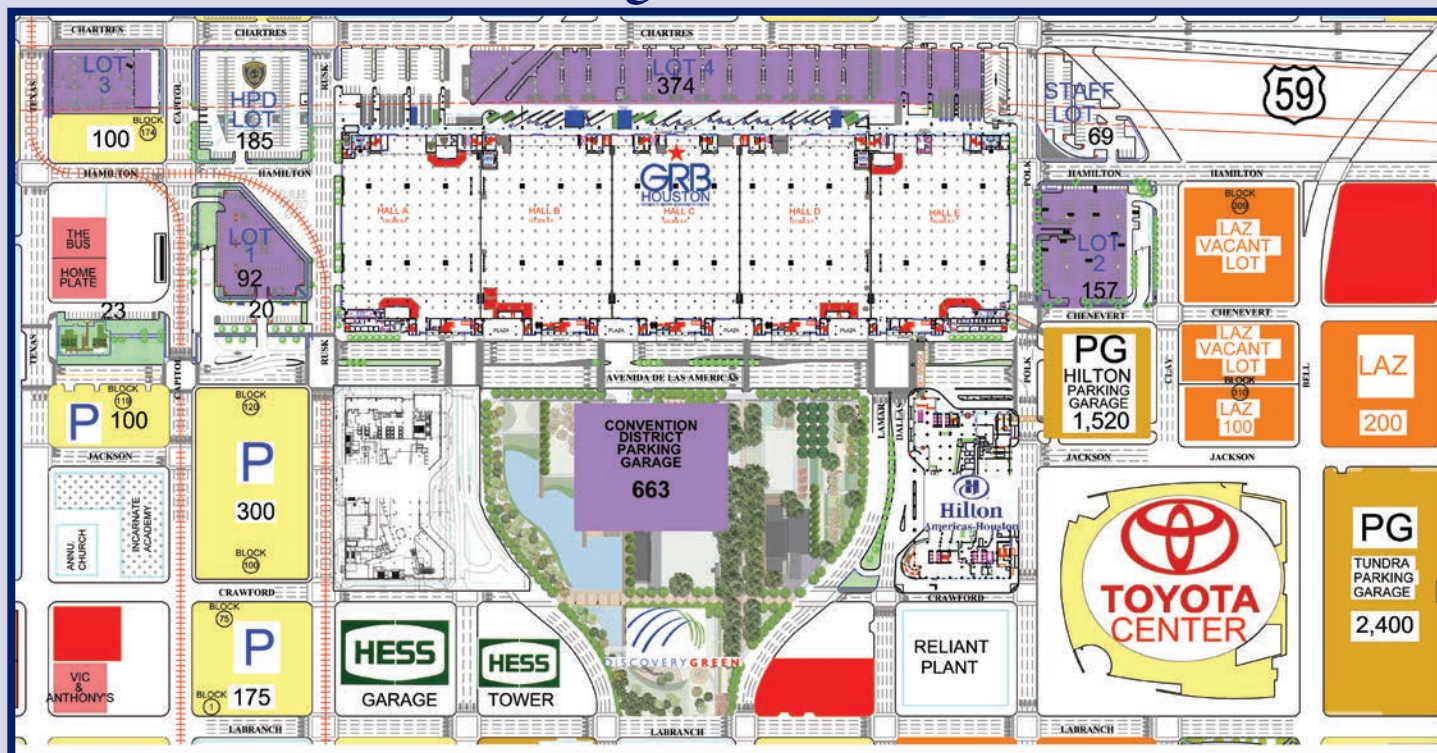
2

HYATT REGENCY  
1200 Louisiana St.  
(713) 654-1234

## Greenlink Bus Route

Light Rail

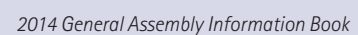
## Convention Center Parking Areas





**MAP KEY**

DOWNTOWN NEIGHBORHOODS	DOWNTOWN TUNNELS & SKYWALKS
Public Garage Parking	Tarrant Loop
Warehouse	W. Walker Tunnel
Historic	N. Louisiana Tunnel
Harris County	Harris County Tunnel
Ballpark	N. Travis Tunnel
Convention	Lamar Tunnel
Skyline	Rusk Tunnel
Shopping	E. McKinney Tunnel & Skywalk
Theater	S. Louisiana Tunnel & Skywalk
Civic Center	W. Dallas Tunnel & Skywalk
Medical	Transit-only Tunnel Access
Parks & Squares	Sports & Convention Skywalk
	St. Joseph Skywalks
	METRORail Stations & Route
	Greenlink
	Hike & Bike Trails
	Houston B-Cycle
	Handicapped Access





# General Assembly Schedule

## General Assembly activities are in bold type.

*All times and meeting rooms are subject to change.*

The Docket for the General Assembly may be found online at **pcaac.org**.

**A complete listing of churches is provided on page 24.**



Courtesy Greater Houston CVB

### MONDAY, JUNE 16, 2014

<b>7:30am – 5pm</b> .....	<b>Commissioner Registration and Message Center</b> .....	<b>Americas Ballroom</b>
11am – 5pm .....	Family Registration .....	Level Two Pre-function
<b>11am</b> .....	<b>Briefing of Committees of Commissioners</b> .....	<b>Meeting Room 335</b>
12 noon .....	Lunch Recess	
<b>1pm</b> .....	<b>Meetings of Committees of Commissioners</b>	
	Overtures .....	Meeting Room 335
	Administration .....	Meeting Room 336A
	Christian Education .....	Meeting Room 339A
	Mission to North America .....	Meeting Room 337B
	PCA Retirement and Benefits, Inc. ....	Meeting Room 337A
	Reformed University Ministries .....	Meeting Room 336B
1:30pm .....	Exhibitor Orientation and Welcome .....	Lanier Ballroom J
2 – 6pm .....	Exhibit Hall Set-up .....	Americas Ballroom
3 – 4pm .....	Women's Prayer Time (coordinated by CEP) .....	Skyline Ballroom



Stay informed!  
"Like" the PCA  
General Assembly  
Facebook Page.



PCA file photo



# General Assembly Schedule

**TUESDAY, JUNE 17, 2014**

<b>7:30am – 7:45pm</b>	<b>Commissioner Registration and Message Center</b>	<b>Americas Ballroom</b>
7:30am – 7:45pm	Family Registration	Level Two Pre-function
7:30am – 5:30pm	Nursery Open	Convention Center Room 370
8am – 11pm	Exhibit Hall Open*	Americas Ballroom
<b>8am</b>	<b>Committees of Commissioners begun on Monday</b>	<b>TBA (continue as needed)</b>
<b>8am</b>	<b>Briefing for Committees of Commissioners</b>	<b>Grand Ballroom J</b>
8:30am – 5pm	"Connect Time" for Elementary and Youth	Discovery Green Park
<b>9am</b>	<b>Meetings of Committees of Commissioners</b>	
	Covenant College	Meeting Room 327
	Covenant Theological Seminary	Meeting Room 328
	Interchurch Relations	Meeting Room 337A
	Mission to the World	Meeting Room 336B
	PCA Foundation	Meeting Room 337B
	Ridge Haven	Meeting Room 329
9 – 10am	Women's Prayer Time <i>(coordinated by CEP)</i>	Lanier Ballroom A
9:30am – 2pm	Tour – RTS Houston and Stone Chapel <i>(men and women)</i>	Departs Hilton East Lobby
10am	Meeting of the Administrative Committee Board of Directors	Meeting Room 343A
<b>11am</b>	<b>Meeting of Committee on Constitutional Business <i>(if necessary)</i></b>	<b>TBA</b>
11:30am	Downtown Houston Tunnel Tour <i>(men and women)</i>	Departs Hilton East Lobby
12 noon	Lunch Recess	
<b>12 noon – 1pm</b>	<b>Briefing of Floor Clerks</b>	<b>Lanier Ballroom E</b>
12:45 – 1:45pm	Pre-Assembly Prayer Meeting <i>(men and women)</i>	Lanier Ballroom J
1 – 5pm	Presbyterian History Pre-Conference	Meeting Room 329
	<i>(coordinated by PCA Historical Center)</i>	
<b>2pm</b>	<b>Theological Examining Committee <i>(if necessary)</i></b>	<b>TBA</b>
<b>2 – 3pm</b>	<b>Seminars (First Session)</b>	<b>Level Three Meeting Rooms</b>
<b>3:30 – 4:30pm</b>	<b>Seminars (Second Session)</b>	<b>Level Three Meeting Rooms</b>
	<i>(coordinated by Covenant College)</i>	
4:30 – 6:30pm	Briefing for Communion Elders and Ushers	Lanier Ballroom E
<b>7pm</b>	<b>Worship Service Musical Prelude</b>	<b>Lanier Ballroom</b>
<b>7:30pm</b>	<b>42nd General Assembly Opening Session</b>	<b>Lanier Ballroom</b>
	<i>Call to Order by the Moderator: Bruce Terrell</i>	
	<i>Worship Service and Observance of the Lord's Supper</i>	
<b>9 – 10pm</b>	<b>Election of Moderator, Approval of Docket</b>	<b>Lanier Ballroom</b>
10pm	Exhibit Hall Kick-off	Americas Ballroom

*(schedule continued next page)*

\*Exhibit Hall closed during Worship Service



Courtesy Greater Houston CVB



Courtesy Greater Houston CVB



PCA File Photo

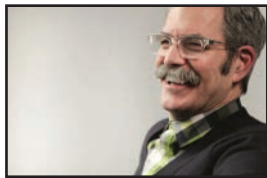


# General Assembly Schedule

## WEDNESDAY, JUNE 18, 2014



Courtesy Greater Houston CVB



Courtesy Paul Tripp Ministries

<b>7:30am – 5pm</b>	<b>Commissioner Registration and Message Center</b>	<b>Americas Ballroom</b>
7:30am – 5:30pm	Nursery Open	Convention Center Room 370
8am – 11pm	Exhibit Hall Open	Americas Ballroom
<b>8 – 9am</b>	<b>Seminars</b> <i>(coordinated by Covenant College)</i>	<b>Level Three Meeting Rooms</b>
8 – 9:30am	Elementary & Youth Praise and Worship	Convention Center Room 381
<b>9:15 – 10:30am</b>	<b>Assembly-wide Seminar: PCA Past, Present &amp; Future</b>	<b>Lanier Ballroom</b>
	<i>(coordinated by Covenant College)</i>	
9:30am – 2pm	Elementary & Youth: Tours of Stadium & Arena	Departs from Convention Center
<b>10:45am</b>	<b>42nd General Assembly Reconvenes</b>	<b>Lanier Ballroom</b>
11:30am – 2:30pm	Women's Luncheon & Program <i>(coordinated by CEP)</i>	Hyatt Regency Ballroom
	<i>Speaker: Dr. Paul Tripp</i>	
12 noon	Lunch Recess	
<b>1:30pm</b>	<b>42nd General Assembly Reconvenes</b>	<b>Lanier Ballroom</b>
5pm	Dinner Recess	
<b>7pm</b>	<b>Worship Service Musical Prelude</b>	<b>Lanier Ballroom</b>
<b>7:30pm</b>	<b>Worship Service</b>	<b>Lanier Ballroom</b>
9pm	Exhibit Hall Fellowship & Ice Cream Social	Americas Ballroom





# General Assembly Schedule

## THURSDAY, JUNE 19, 2014

7:30am – 5pm ..... Commissioner Registration and Message Center ..... Americas Ballroom  
 7:30am – 5:30pm ..... Nursery Open ..... Convention Center Room 370  
 8am – 8pm ..... Exhibit Hall Open ..... Americas Ballroom  
**8 – 9:15am ..... Seminars** (*coordinated by Covenant College*) ..... **Level Three Meeting Rooms**  
 8:30am – 5pm ..... NASA Tour: Open to Women, Children and Youth ..... Departs Hilton East Lobby  
**9:30am ..... 42nd General Assembly Reconvenes ..... Lanier Ballroom**  
 12 noon ..... Lunch Recess  
**1:30pm ..... 42nd General Assembly Reconvenes ..... Lanier Ballroom**  
 2 – 3pm ..... Ladies Tea and Talk ..... Hyatt Regency Window Box  
 5pm ..... Dinner Recess  
**7pm ..... Worship Service Musical Prelude ..... Lanier Ballroom**  
**7:30pm ..... Worship Service ..... Lanier Ballroom**  
**9pm ..... Reconvene Business Session** (*if necessary*) ..... **Lanier Ballroom**



## FRIDAY, JUNE 20, 2014

8am ..... 42nd General Assembly Reconvenes ..... Lanier Ballroom  
 12 noon ..... Apostolic Benediction and Adjournment ..... Lanier Ballroom



### Day Trip to Space Center Houston and NASA!

Thursday, June 19, 2014 • 8:30am – 5pm

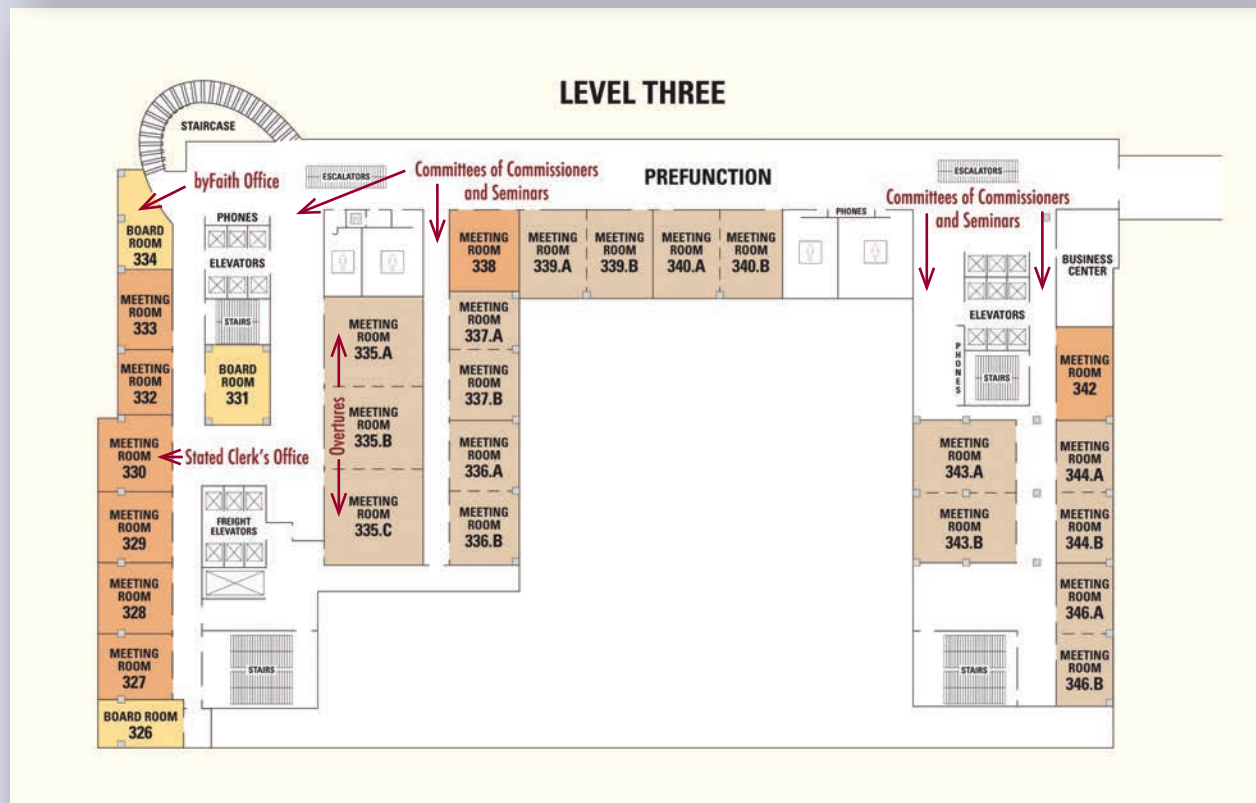
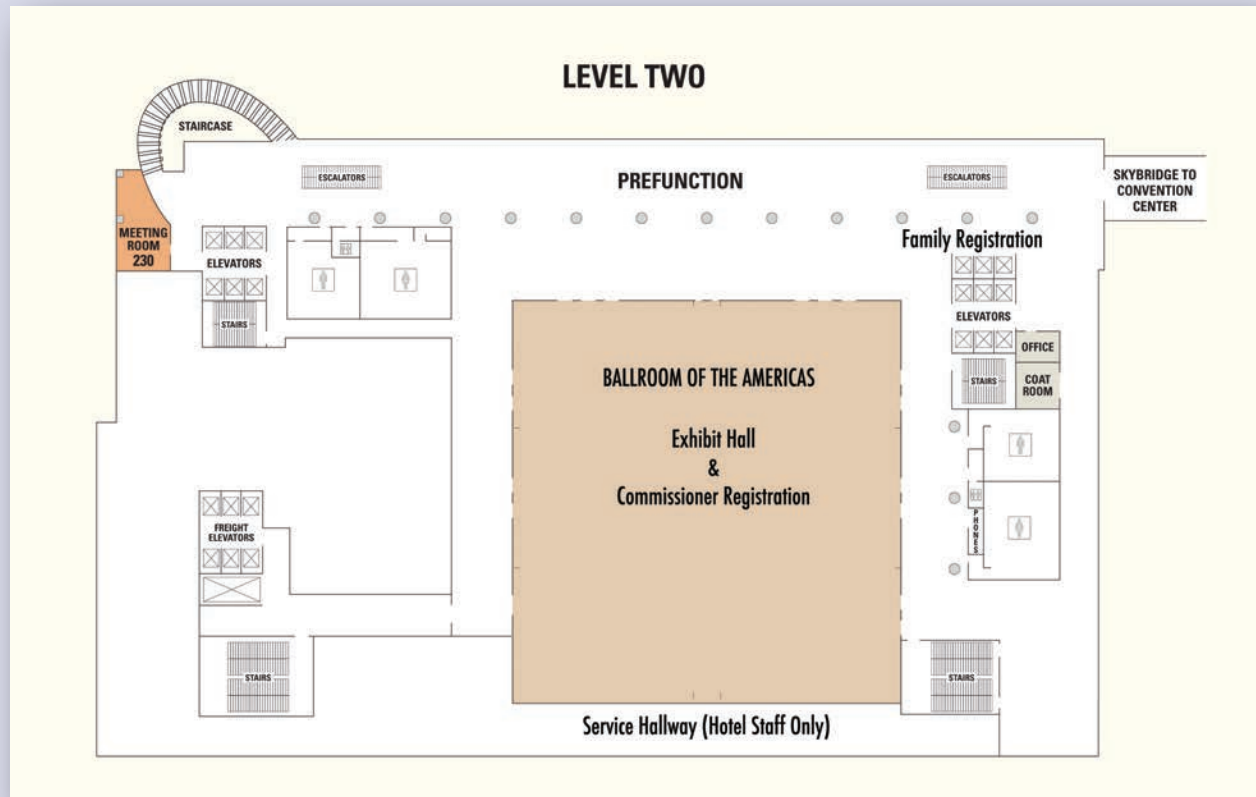
"Intelligent Fun" defines the way that visitors describe their day at Space Center Houston—a day when they've touched a Moon rock, witnessed a shuttle launch, enjoyed a guided tour of NASA, and seen real space-flown vehicles. Experience all this and much, much more!

Your group ticket will include over 250 Space Center Houston adventures, including giant screen movies, the Discount Tire NASA Tram Tour, all the shows, new exhibits, demonstrations, Kid's Space Place and more.

Visit the official website at [SpaceCenter.org](http://SpaceCenter.org) to obtain more detailed information about the Center. This PCA day trip is open to women, youth and children. **Register before May 9, 2014** (*see page 36*).



# Hilton Americas Meeting Spaces



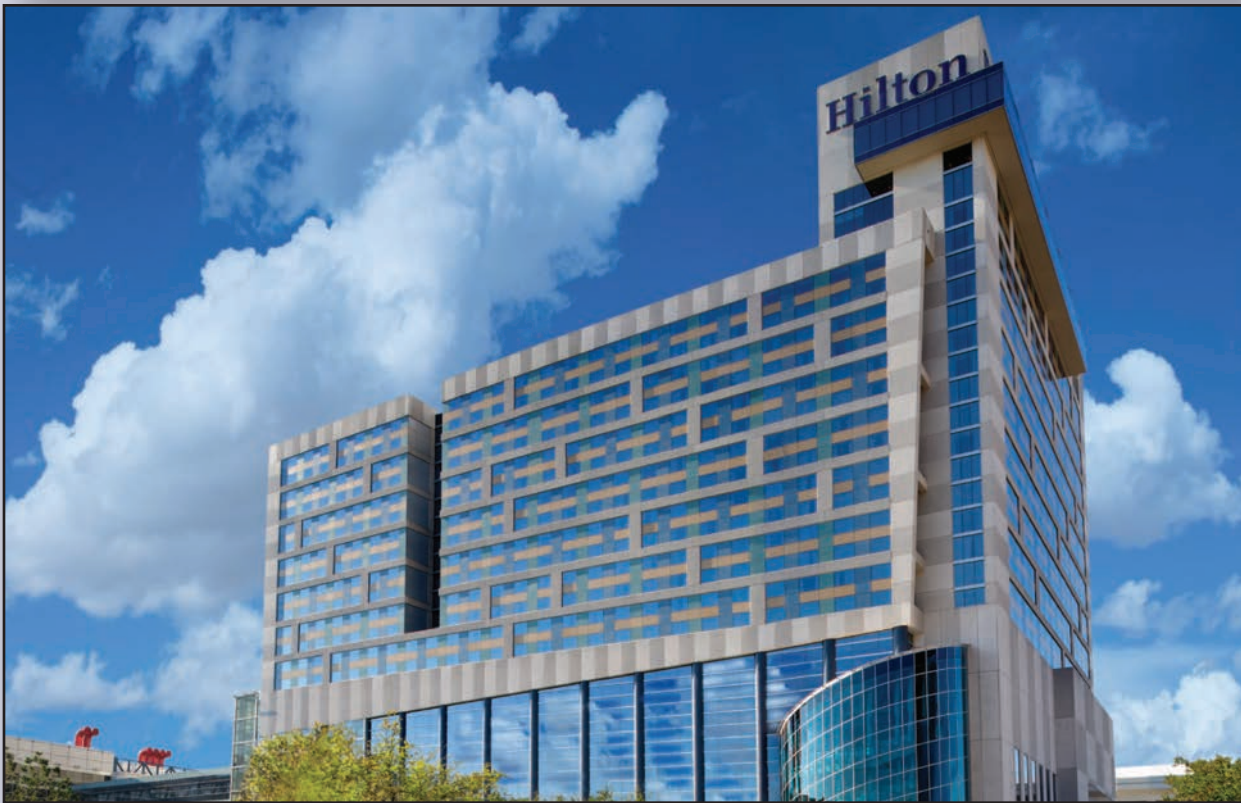


**LEVEL FOUR**

The floor plan includes the following areas and features:

- MEETING ROOM 430** (Orange shaded area)
- STAIRCASE** (Curved staircase at the top left)
- ESCALATORS** (Two sets, one near the top center and one near the top right)
- PREFUNCTION** (Large area at the top)
- Assembly Hall** (Large central area)
- LANIER GRAND BALLROOM** (Large central area, divided into sections)
- GRAND BALLROOM J** (Left section of the ballroom)
- GRAND BALLROOM K** (Middle section of the ballroom)
- GRAND BALLROOM L** (Bottom section of the ballroom)
- Service Hallway (Hotel Staff Only)** (Bottom area)
- Food functions and other meetings** (Vertical text on the left side of the ballroom area)
- Media Center** (Right side area)
- OFFICE 432** and **OFFICE 433** (Right side area)
- REG. DESK** (Right side area)
- ELEVATORS** (Multiple sets throughout the plan)
- STAIRS** (Multiple sets throughout the plan)
- PHONES** (Near the top left elevators)
- FREIGHT ELEVATORS** (Near the bottom left elevators)
- RESTROOMS** (Two locations on the left side)

An inset photograph shows the interior of the Assembly Hall, featuring a large stage with a curved, illuminated ceiling and a carpeted floor.







Restoring Christ to Counseling and Counseling to the Church

CCEF works to restore Christ to counseling.  
CCEF works to restore counseling to the church.

CCEF serves the church in  
these primary ways:

#### TEACHING

[ccef.org/courses](http://ccef.org/courses)

Our faculty teach a wide range of courses on all aspects of counseling ministry. Onsite classes serve students in the Philadelphia area. Online courses bring our classroom to students around the world.

#### WRITING

[ccef.org/resources](http://ccef.org/resources)

Our authors write books, booklets, articles, and training materials for pastoral care and counseling. We publish a journal three times a year. Our website provides thousands of additional resources.

#### COUNSELING

[ccef.org/counseling](http://ccef.org/counseling)

Our counselors serve people in need at our three locations. We provide consultation with pastors and other counselors. We mentor counselors through our internship program and supervision groups.

#### SPEAKING

[ccef.org/events](http://ccef.org/events)

Our faculty and counselors speak at CCEF's national conference each year, and by request at other seminars, training events, and conferences.

[ccef.org](http://ccef.org)



# Houston Attractions

**Art Car Museum** Dubbed the Garage Mahal, the Art Car Museum is the only place you'll find the antennae-and-wing-cloaked Roachster or a Honda motorcycle that's been transformed into a shiny red rolling stiletto heel.

**Battleship Texas** The last of the battleships to participate in World Wars I and II, USS Texas became the first battleship memorial museum in the U.S. in 1948. Go aboard the landmark and get a hands-on look at crew life during war. Guests can climb high on the bridge, control the turrets on the main deck and go below, into the ship's underground city.

**Beer Can House** In 1968, John Milkovich began covering his Heights home in "aluminum siding" made from 50,000 flattened beer cans.

**Blue Bell** Blue Bell ice cream is available in about 26% of the nation's supermarkets, and it ranks as one of the top three best-selling ice creams in the country. Guided tours and a short video about Blue Bell and how they make ice cream are offered at their production facilities. [Bluebell.com](http://Bluebell.com)

**Brazos Bend State Park** Covering roughly 5,000 acres along the Brazos River, the park offers hiking, biking, camping and alligator-spotting opportunities. Stop by the George Observatory, where a 36-inch telescope enables you to see meteors, fireballs and, sometimes, a partial or total eclipse of the moon.

**Children's Museum of Houston** Ranked the number one children's museum in the country by Parents magazine, CMH is the most attended museum of its size in the nation, serving more than one million people annually. Bring the kids to enjoy all 90,000 square feet of jam-packed, hands-on exhibits and educational fun.

**Downtown Tunnels** Wondering how downtown's 150,000 workers get around during the day? Find them underground! The seven-milelong climate-controlled tunnels link 95 downtown blocks 20 feet below the street. Among the tunnels' offerings are food courts, dry cleaners, flower shops, doctors and beauty salons.

**George Ranch Historical Park** Discover more than 100 years of Texas history at George Ranch's 480-acre living history site. Hands-on experiences and costumed interpreters help depict life on the 23,000-acre working ranch throughout the years. For even more authentic flavor, make reservations for Saturday's historic lunches, served inside one of the ranch's five historic venues.

**Houston Museum of Natural Science** This multilevel destination highlights the Earth's wonders in world-class touring exhibitions. The museum also makes room for the Wortham Theatre screen, Cockrell Butterfly Center, Burke Baker Planetarium and innovative new Paleontology Hall.

**Houston Zoo** Walk on the wild side with 4,500 animal residents. The 55-acre zoo fosters an appreciation for the ecosystems of the natural world. Nearby, Hermann Park Pavilion invites visitors to tour the park on a miniature train or cruise on the duck pond in a pedal boat.

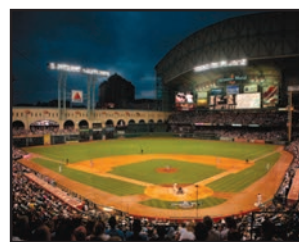
**Minute Maid Park Tours** Go behind-the-scenes and see the Houston Astros dugout, luxury suites, broadcasting booths and more. Tours last one hour and are offered Monday through Saturday, 10 a.m. to noon.

**Museum of Fine Arts, Houston** One of the premier art museums in the U.S., the MFAH anchors the Museum District with exhibitions divided between two gallery buildings, a sculpture garden and two house museums.

**Space Center Houston** Guests get an in-depth look at the nation's space program. Go inside the Skylab training facility, witness a space shuttle launch, and check out the Space Shuttle Explorer.

**Splashtown** A 53-acre waterpark offering more than two dozen water rides, pools and slides. Hit the Texas Freefall, Tornado and Stingray Racer or grab a tube and float the lazy river or wave pool.

**Topgolf Houston** West Houston's upscale driving range opened in late 2012, offering golfers a tech-savvy tee-off experience in a three-story entertainment complex featuring 102 hitting bays, a rooftop terrace, a restaurant and multiple bars.



All photos this page courtesy Greater Houston CVB

## Houston Shopping

The fourth largest city in the nation, Houston is arguably the style capital of the South. It's home to a Project Runway winner and more than a dozen distinct shopping areas, with retail that runs the gamut from vintage to high-end designer. The top four shopping areas include:

**Galleria** and surrounding shopping areas:

*[Simon.com/mall/the-galleria](http://Simon.com/mall/the-galleria)*

**Rice Village:** *[RiceVillageOnline.com](http://RiceVillageOnline.com)*

**Montrose:** *[VisitHoustonTexas.com/travel-tools/houston/montrose/](http://VisitHoustonTexas.com/travel-tools/houston/montrose/)*

**Old Town Spring:** *[OldTownSpring.com](http://OldTownSpring.com)*



**FOUR YEARS AGO  
I'D NEVER HEARD OF ERSKINE.  
NOW I'LL NEVER FORGET IT.**



## **A Distinctive Academic Community Worth Discovering for Nearly 175 Years.**

As South Carolina's first private Christian college, Erskine has equipped generations of graduates to flourish in lives of service to Christ, His Church, and the world. Each individual's unique talents, interests, and contributions help shape the community's experience.

Combined with our commitment to academic excellence and Christian authenticity, this family-like learning environment becomes like a second home to those who've experienced it. It's a rare college experience.

So while Erskine may be a little harder to find, you'll always know where you belong.



**ERSKINE**  
COLLEGE  
Due West, South Carolina

**KNOW. BE KNOWN.**  
[erskine.edu](http://erskine.edu)



# Worship Speakers

## Raymond A. Cortese

Rev. Raymond A. Cortese, a native of Miami, Florida, was the organizing pastor of Seven Rivers Presbyterian Church (SRPC), located in Lecanto, Florida 30 years ago, and he has continued to serve as pastor there. An integral part of the ministry of SRPC is Seven Rivers Christian School, now in its 26th year serving families and students from Pre-K3 thru 12th grade.

Rev. Cortese holds a Bachelor of Arts degree from Belhaven College, studied at Reformed Theological Seminary, and received his Master of Divinity degree from Westminster Theological Seminary.

He and his wife Diane have four children and four grandchildren.



## Dr. Derek W.H. Thomas

Dr. Derek W.H. Thomas, a native of Wales, is the Senior Minister at First Presbyterian Church (ARP) in Columbia, South Carolina. He is also the Professor of Systematic and Historical Theology at Reformed Theological Seminary (Atlanta), and the Editorial Director for the Alliance of Confessing Evangelicals. He previously served as the Chairman of the Theology Department at Reformed Theological Seminary (Jackson) and the Minister of Teaching at First Presbyterian Church (PCA)

in Jackson, Mississippi. He holds a Bachelor of Science in Mathematics from the University of Wales, a Masters of Divinity from Reformed Theological Seminary (Jackson), and a Doctor of Philosophy from the University of Wales (Lampeter). He was ordained in the Evangelical Church of Ireland, and served Stranmillis Evangelical Presbyterian Church in Belfast for 17 years before moving to the United States. He has published more than twenty books and contributed to many others.

He and his wife, Rosemary, have two grown children and two grandchildren, a dog named Luther, and a somewhat dysfunctional cat named Chloe. He is passionate about classical music and opera.

## Rev. William Y.T. Jin

Rev. William Y.T. Jin is currently serving as the Senior Minister at Bethel Korean Presbyterian Church in Ellicott City, Maryland. Rev. Jin is a member of the Korean Capital Presbytery (PCA) and has a Master of Divinity Degree from Westminster Theological Seminary. Currently, he is completing his Doctorate of Ministry in Biblical Counseling. Rev. Jin has served as Stated Clerk in the Korean Eastern Presbytery and on the Board of Covenant College. His major emphasis has been in the areas of Biblical Counseling and Marriage and Family Therapy (LMFT).

Rev. Jin and his wife Yong-Ae Jin have been married more than 23 years with four children: Rachel, Michelle, Joshua, and Abigail.





# List of Churches

Organization Name	City/State	Phone	Web site
<b>Houston Metro Presbytery</b>			
Bay Area Presbyterian Church .....	Webster, TX.....	281-280-0713.....	www.bapc.org
Christ Church.....	Katy, TX.....	281-392-0002.....	www.cckpca.org
Christ the King Presbyterian Church.....	Houston, TX.....	713-892-5464.....	www.christtheking.com
Covenant Presbyterian Church .....	Houston, TX.....	281-870-0349.....	www.covenantpca.org
Covenant Presbyterian Church .....	Lufkin, TX.....	936-637-6043.....	www.pcalufkin.org
Faith Community Church.....	Pearland, TX.....	281-997-3660.....	www.growingdeeper.org
Grace Presbyterian Church.....	The Woodlands, TX.....	281-296-0911.....	www.gracewoodlands.org
Hosanna Community Church.....	Huntsville, TX.....	936-295-1836.....	
Oaklawn Presbyterian Church.....	Houston, TX.....	713-921-5635.....	www.oaklawnpca.org
Providence Presbyterian Church .....	Sugar Land, TX.....	281-980-2522.....	www.providencepresbyterian.org
Redeemer Sugar Land .....	Sugar Land, TX.....	832-576-2216.....	www.redeemersl.org
Reformed Presbyterian Church.....	Beaumont, TX.....	409-898-3558.....	www.rpcbmt.org
Southwest Presbyterian Church.....	Bellaire, TX.....	713-432-0040.....	www.swpres.org
Spring Cypress Presbyterian Church.....	Spring, TX.....	281-320-3650.....	www.springcypresschurch.com
<b>Korean Southern Presbytery</b>			
Global Presbyterian Church.....	Houston, TX.....	713-320-7721.....	
Hanmaeum Presbyterian Church of Houston .....	Houston, TX.....	713-935-9191.....	www.hanmaeumhouston.org
Korean Faith Presbyterian Church of Houston.....	Houston, TX.....	832-264-9566.....	www.kfpch.org
Korean Open Door Presbyterian Church.....	Houston, TX.....	713-594-3373.....	
Korean Presbyterian Church of Houston .....	Houston, TX.....	713-973-1123.....	www.kpch.org
Peace Presbyterian Church of Houston.....	Houston, TX.....	713-825-2864.....	
Ye Darm Presbyterian Church of Houston.....	Houston, TX.....	713-461-0709.....	www.ydpch.org
Austin Grace Presbyterian Church.....	Pflugerville, TX.....	512-801-2876.....	
Bright Castle Presbyterian Church.....	Killeen, TX.....	254-554-3332.....	www.brightcastle.org
Hope Presbyterian Church of Dallas .....	Carrollton, TX.....	214-288-1912.....	
Korean Church of the Lord .....	Carrollton, TX.....	972-242-1104.....	www.lordch.org
Korean Grace Presbyterian Church of Corpus Christi .....	Corpus Christi, TX.....	361-425-9384.....	www.koreangracechurch.org
Na Nu Rie Presbyterian Church of Lawton.....	Lawton, OK.....	217-637-8889.....	
New Orleans Onnuri Presbyterian Church .....	Metairie, LA.....		
New Somang Presbyterian Church.....	College Station, TX.....	979-229-6307.....	www.newsomang.org
Pilgrim Presbyterian Church of Dallas .....	Carrollton, TX.....	214-960-0401.....	
Sung San Presbyterian Mission.....	Carrollton, TX.....		
The True Light Church of Dallas.....	Irving, TX.....	972-438-5956.....	



# WE KNOW YOU HAVE A LOT OF CHOICES WHAT SETS GCP APART?



**OUR SOVEREIGN GOD** *Our focus is on God as our Sovereign Creator, Redeemer, and King. He is the author of the Bible and the main subject and character of His Word. Our purpose is to glorify and enjoy Him forever.*



**SHOW ME JESUS™** *All of Scripture is the unfolding story of salvation and Jesus is its focus. We show how Jesus, revealed throughout the Bible, came to seek and save the lost.*



**GOD'S GRACE IN THE COVENANT** *From Genesis to Revelation, God's covenant is the thread that ties the Bible together. We build on that truth to teach students of all ages the consistent faithfulness of God.*



**HISTORICAL-REDEMPTIVE APPROACH** *This Reformed approach to the Bible is essential to understanding God's Word as the unified counsel of God. Therefore, we interpret each portion of God's Word in context of the whole.*



**CHURCH-FAMILY CONNECTION** *Church and home: working together to point covenant children to Christ. We believe parents are key in the spiritual training of their children. We provide resources for families to reinforce solid biblical teaching.*

## OUR VISION

*GCP serves the church with solidly biblical, Reformed publications, assisting God's people with the exciting ministry of making disciples in response to the Great Commission.*



[www.gcp.org](http://www.gcp.org) | 800-695-3387

Great Commission Publications is the joint publishing ministry of the Committee on Christian Education of the Orthodox Presbyterian Church and the Committee for Christian Education & Publications of the Presbyterian Church in America.





# PROVIDENCE CHRISTIAN COLLEGE

ESTABLISHED 2005 | PASADENA, CALIFORNIA | ACCREDITED - REFORMED

## *Our Mission*

Equipping students to be firmly grounded in biblical truth, thoroughly educated in the liberal arts, and fully engaged in their church, their community, and the world for the glory of God and for service to humanity.

**Providence Christian College offers a  
(annually renewable) to all students coming  
Learn more or Apply at**

1539 E Howard St | Pasadena, CA





*Craft Your  
Own Major*

**SOCIAL  
SCIENCE  
HISTORY** biblical  
languages  
**EDUCATION**  
humanities  
communication arts  
**LIBERAL ARTS**  
ENGLISH  
ECONOMICS  
BUSINESS  
theological  
studies  
**SOCIETY** PERFORMING  
ARTS BIBLICAL  
STUDIES  
visual  
arts



**\$5000 REFORMED SCHOLARSHIP**  
from P.C.A. churches or C.S.I. schools.

[www.providencecc.edu/admissions](http://www.providencecc.edu/admissions)

California 91104 | 1-866-323-0233







...AND FROM CHILDHOOD  
YOU HAVE KNOWN THE  
HOLY SCRIPTURES...

CHRIST-CENTERED. REFORMED. GOSPEL-DRIVEN.

- + **INVESTIGATING GOD'S WORD...**  
Children's Sunday School Curriculum
- + **THE SCOTTISH SLEUTHS**  
Vacation Bible School Series
- + **IMPLEMENTING GOD'S WORD...**  
Youth Sunday School Curriculum
- + **INVESTIGATING GOD'S WORD... AT HOME**  
Family Bible Study
- + **INVESTIGATING GOD'S WORD... AT SCHOOL**  
Christian School Bible Curriculum



Visit our website for more information and  
free downloadable samples.

[www.onestoryministries.org](http://www.onestoryministries.org) | 601.519.8423



Connect with us on Facebook!



Follow us on Twitter!





# Welcome to Women and Families



## Welcome from the Coordinator of Women's Ministries

In the PCA's yearly travels to various cities in the United States, we leave the warmth and charm of Greenville, South Carolina to head "deep into the heart of Texas"—Houston, Texas—for the 42nd General Assembly of the Presbyterian Church in America.

The churches of the Houston Metro Presbytery and Korean Southern Presbytery will be our hosts, welcoming us to their city—the fourth largest U.S. city and growing! Houston offers the visitor a mix of Southern charm and urban appeal, a city of great diversity—it can lead us to the moon!! Pray with me for the men and women of this presbytery who are investing their energies and time on behalf of the PCA family.

The Christian Education and Publications Committee (CEP), through Women's Ministry, is privileged to work in tandem with the Administrative Committee and local host committee, under the theme of *Proclaim Christ—Disciple the Nations*, in crafting a schedule that fosters community and builds on a foundation of prayer and biblical teaching.

A few of the specific highlights of this 42nd Assembly are:

- A special assembly-wide seminar on Wednesday morning on the *PCA Past, Present, and Future* as we celebrate 40 years as a denomination.
- The two prayer times *especially for women* at the Hilton on Monday afternoon and Tuesday morning, followed by the Tuesday afternoon seminars. Continue to check out the Administrative Committee GA website [www.pcaac.org](http://www.pcaac.org) to track the schedule and offerings of the Tuesday - Thursday seminars.
- "Tuesday Tunnel Tour." Because Houston is a "big city," part of the planning for the PCA is built around introducing us to a unique mode of travel. Come enjoy walking in this safe underground setting with air conditioned comfort on a hot June day; visiting lovely shops and stopping at various food venues along the way.
- The annual General Assembly Luncheon and Program hosted by CEP and the local host committee will offer wives of ruling and teaching elders the opportunity of fellowship, tasty Texas fare, and being taught by Dr. Paul Tripp. Read more details at the CEP website [pcacep.org/women](http://pcacep.org/women).
- Thursday offers a special NASA Tour open to women, children, and youth that will offer a fascinating insight into our nation's exploration of space.
- For those who choose not to make the NASA trip, join us at the Hyatt Regency for a relaxed time of *Tea and Talk*, enjoying soothing background music by a gifted harpist.
- **Be sure to check out the General Assembly Schedule on page 34 for Women's Activities!**

This special week in our 40 years as a denomination and this location offer the covenant body of the PCA another time for worship, fellowship, and the privilege of doing the business of the church.

With anticipation,

A handwritten signature in dark ink, reading "Jane".

Jane Patete  
Women's Ministries Coordinator



Courtesy Greater Houston CVB



# Welcome from the Women's Committee



Courtesy Greater Houston CVB

## Proclaim Christ. . . Disciple the Nations

The Women's Subcommittee for the 42nd General Assembly of the Presbyterian Church in America would like to welcome you to Houston, Texas. We encourage you to revel in the fourth largest city in the United States. Houston offers a wealth of sites: stunning skyscrapers, a plethora of museums and theaters, a renowned medical center, and wonders of NASA. Due to our diversity of cultures, our city affords many opportunities to explore new cuisines.

Seminars for the wives of our ruling and teaching elders will be held at the Hilton Americas, our host hotel. Our women's activities will be focused at the Hyatt Regency Houston. Although the Hyatt is in walking distance from the Hilton, *transportation will be provided for these events*. Houston, in the summer, is often quite warm!

Everything is bigger in Texas, and Houston is no exception. From the front door of the Hilton Americas, walk across the street to enjoy Discovery Green. Explore the amazing tunnel system under the city that links hotels and businesses with abundant dining and shopping opportunities. In Houston and the surrounding areas, upscale shopping is available not only at the Galleria but at several other distinctive locations brimming with retail and restaurant delights. The Museum District offers treasures for every age from fine arts to an expansive zoo.

Houston is now considered to have more ethnicities represented than any other US city. With this in mind, we are very aware that when we proclaim Christ, we are discipling nations beginning here and spreading throughout the world. Enjoy our General Assembly with its women's events, unique attractions, and special times to reconnect with friends from throughout the PCA.

*Go therefore and make disciples of all nations, baptizing them in the name of the Father and of the Son and of the Holy Spirit, teaching them to observe all that I have commanded you.*

*And behold, I am with you always, to the end of the age.*

—Matthew 28:19-20

Women's Subcommittee Co-Chairs  
Barbara Brister and Nancy Morris



Courtesy Greater Houston CVB



Courtesy Greater Houston CVB



# Women's Programs



## Tuesday Program "Reformed Ramblings"

sponsored by Reformed Theological Seminary Houston

**FREE** to all who register before May 9, 2014. (After May 9, \$10. After June 13, \$12.)

Please do bring your husband or male friends and older children.

**Departure:** Tuesday 9:30am; **Return to Assembly site:** 2pm

Enjoy a delightful catered lunch at the beautiful Houston campus of Reformed Theological Seminary and journey with us to an artistic reconstruction of a 500 A.D. church from Tomarza, Cappadocia (Turkey). This Stone Chapel was built by referring to photos of the original church ruins taken in 1909, as well as by using an analysis of the site by a Harvard student published in 1971. Typical of many Byzantine churches of that area, the church was laid out in the shape of a cross. Its ceiling has been decorated with beautiful images depicting Bible stories, painted by Richard McCluskey. Inside the Lanier Theological Library, just steps away from the chapel, is a collection including Iron Age pottery, Roman currency, an original fragment of a dead sea scroll, a first edition printing of the King James Bible, and a collection of C.S. Lewis letters, books, magazines, and articles. [www.rts.edu/houston](http://www.rts.edu/houston); <http://www.laniertheologicallibrary.org/>



Courtesy Reformed Theological Seminary

## Wednesday Program Dr. Paul Tripp, Speaker

Paul David Tripp is a pastor, author, and international conference speaker. He is the president of Paul Tripp Ministries and works to connect the transforming power of Jesus Christ to everyday life. This vision has led Paul to write 14 books on Christian living and to travel around the world preaching and teaching. Paul's driving passion is to help people understand how the gospel of Jesus Christ speaks with practical hope into all the things people face in this broken world.

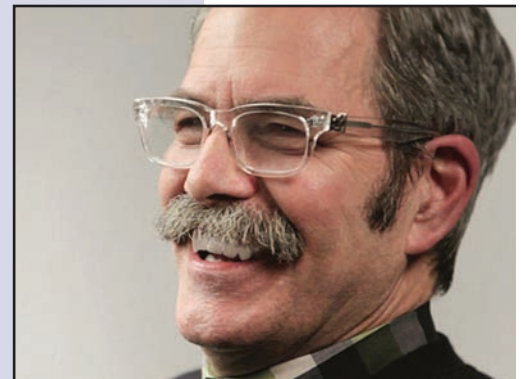
Paul was born in Toledo, Ohio on November 12, 1950. Paul's parents had recently come to faith in Christ and were very excited about parenting as believers. Even though the Tripps were committed to having daily family worship and attending church whenever the doors were open, Paul's family was not without significant struggles. God used these experiences to build in Paul a desire to see the Gospel applied to the realities of life in a fallen world.

Paul attended Columbia Bible College (now Columbia International University) and majored in Bible and Christian Education. He went on to receive his Master of Divinity from the Reformed Episcopal Seminary (now Philadelphia Theological Seminary) and his D.Min in Biblical Counseling at Westminster Theological Seminary.

Over the course of his ministry life, Paul planted a church, founded a Christian school, wrote worship songs, and toured with a Christian band. He was a faculty member at the Christian Counseling and Educational Foundation (CCEF), a lecturer in Biblical Counseling at Westminster Theological Seminary, and a Visiting Professor at Southern Baptist Theological Seminary. More recently, Paul served on the pastoral staff at Tenth Presbyterian Church, Philadelphia, as the Minister to Center City.

Paul launched Paul Tripp Ministries in June of 2006. With a pastor's heart for pastors, he is also Professor of Pastoral Life and Care at Redeemer Seminary and the Executive Director of the Center for Pastoral Life and Care, under the auspices of the Association of Biblical Counselors.

Paul lives in Philadelphia and is hopelessly in love with his wife, Luella. She is the owner of LGTripp Gallery and represents emerging artists focusing on abstract and non-objective work from the Philadelphia region. Paul and Luella have four grown children: Justin, Ethan, Nicole, and Darnay.



Courtesy Paul Tripp Ministries



# Women's Programs

## Thursday Program "Tea and Talk"

Come join us at the Hyatt Regency Window Box on Thursday from 2 until 3pm for "Tea and Talk." Because it bears repeating and emphasizes the healthy and joyous privilege of Christian fellowship, find below some key excerpts from an article from a PCA pastor's wife that was printed before the 33rd General Assembly in Chattanooga, TN. Kate Wheatley, Teaching Elder's wife from Salt Lake City, Utah, tells us why she comes to PCA General Assemblies—why it is important to enjoy the gift of family.

"I personally enjoy General Assembly. Is it the chance to get away from my everyday routine, an opportunity to spend time alone with my husband, . . .? Is it seeing old friends, observing a room full of 'blue hairs'\* and knowing I'm not alone in my pastor's wife role? . . . Is it the discovery of a new city, new history, late laughter with girl friends? Is it listening to the Word brought to life by different voices, . . . hearing stories of God's faithfulness to His people, and being reminded that He is faithful? Is it 'getting over myself'. . .? Is it . . . seeing a bigger picture of the advancing kingdom of God?

"For me, GA is all these things. I need to be connected, need to be reminded, need to have a 'built-in break' I need fresh views, new experiences. I need to be a partner with my husband in this ministry we have together.

"Where else can you surround yourself with like-minded and like-ministried women? . . . Where can you experience the camaraderie of the call? I welcome this opportunity to be among men and women of faith, . . . to deepen ties that will last for eternity, to be challenged in my walk and in my life. I anticipate old friendships being 'caught up,' and new friendships beginning."

*\*Proverbs 16:31—"Gray hair is a crown of splendor: it is attained by a righteous life." The use of the phrase "blue hairs" is intended as a compliment. I look forward to the day my blue hair is evidence of a well-lived life.*



Is Sunday enough to prepare them for their week?

Pioneer Club's weekly children's Bible clubs support your Sunday message.

*Christ-centered, Bible-based and General Assembly approved.*





# BELHAVEN UNIVERSITY

*Our Standard is Christ*

## BEYOND YOUR BEST



UNDERGRADUATE



GRADUATE AND ADULT PROGRAMS



ONLINE

**Nationally  
Recognized  
Undergraduate  
Programs**

**Proven Leader in  
Graduate and  
Adult Studies**

**Innovative  
and Flexible  
Online Degrees**

**E**xcel beyond your highest goals. At Belhaven University, you will find yourself in a place where top-rated faculty and a nurturing environment converge to bring you to your best... then propel you beyond what you believe is achievable. Belhaven is your comprehensive Christian University.

**TEXT "MOREBU" TO (601) 500-5986 FOR MORE INFORMATION**



## A large white space suit (EMU) is displayed in a glass case at the NASA Space Shuttle Pavilion. The suit is shown in a full-body view, standing upright. It features a large, clear, oval-shaped helmet visor and various life-support systems and connectors on the chest and arms. The suit is positioned in front of a dark background within the display case.

12/13/13 12:52 PM



# Youth and Elementary Schedule

## Monday, June 16, 2014

11am – 5pm.....**Family Registration**..... Level Two Pre-function

## Tuesday, June 17, 2014

7:30am – 7:45pm .....**Family Registration** ..... Level Two Pre-function

8:30am – 4:00pm .....**Elementary Students\*/Youth\*\* "Connect Time."** Teaching, activities, monitored hangout area for games and fun at Discovery Green. Lunch provided.  
.....Convention Center Room 381

## Wednesday, June 18, 2014

9:30am – 2pm.....**Tour of Houston Sports Arenas:** Tour of Minute Maid (lunch provided at the ballpark), followed by tour of Toyota Center (*Houston Rockets*) and/or BBVA (*Houston Dynamo*)

2 – 4pm.....**Hangout time** (games, movies, activities, etc.).....Convention Center Room 381

## Thursday, June 19, 2014

8:30am ..... Gather to leave for NASA from Hotel.....Departs Hilton East Lobby

8:30 – 5pm ..... **Houston Space Center Tour, Imax.** Lunch provided.

\* Elementary—rising 2nd graders to 6th graders

\*\* Youth—rising 7th graders to 12th graders



Courtesy Greater Houston CVB



**Registration Deadline: May 9, 2014.**

Questions about youth or children's activities? Email Kyle Bobas at [Kyle@GraceWoodlands.org](mailto:Kyle@GraceWoodlands.org).

Stay informed. "Like" the PCA General Assembly Facebook page.



# Women & Family Activities Registration

## Women and Family Activities Registration

Registration Deadline: May 9, 2014

Check [pcaac.org](http://pcaac.org) to register online.

First name \_\_\_\_\_ Last name \_\_\_\_\_

Street Address \_\_\_\_\_ City \_\_\_\_\_ St \_\_\_\_\_ Zip \_\_\_\_\_

Home phone (\_\_\_\_) \_\_\_\_\_ Cell\*\* (\_\_\_\_) \_\_\_\_\_

Spouse name \_\_\_\_\_ Cell\*\* (\_\_\_\_) \_\_\_\_\_

Church \_\_\_\_\_ Presbytery \_\_\_\_\_ Wife of: TE \_\_\_\_\_ RE \_\_\_\_\_

Email address (to send registration confirmation) \_\_\_\_\_

Location during GA 2014: Hotel Name \_\_\_\_\_

\*\* Cell required when registering children

**REGISTER EARLY TO SAVE**

				Register by 5/9/14	Register 5/10/14 - 6/13/14	Register 6/14/14 - 6/19/14	Subtotal
Day	Time	Event	#ppl	EARLY BIRD	AFTER CUTOFF	ON SITE	Subtotal
Tuesday	10:00am	Galleria Shopping Trip		\$15	\$18	\$21	\$
Tuesday	9:30am	Reformed Rambling (Chapel Tour)		\$0	\$10	\$12	\$
Tuesday	11:30am	Downtown Tunnel Tour		\$0	\$0	\$0	\$
Wednesday	11:30am	Women's Luncheon		\$25	\$33	\$36	\$
Wednesday	12 noon	Women's Program only		\$10	\$12	\$14	\$
Thursday	8:30am	NASA Tour		\$30	\$36	\$43.20	\$
Thursday	2:00pm	Tea and Talk		\$22	\$26	\$30	\$

### Children & Youth Programs & Activities

Day	Time	Event	#ppl	EARLY BIRD	STANDARD	ON SITE	Subtotal
Tuesday	8:30am	Connect Field Day and Lunch		\$10	\$12	\$14.40	\$
Wednesday	9:30am	Sports Arena Tours and Lunch		\$20	\$24	\$28.80	\$
Thursday	8:30am	NASA: Tour, Imax and Lunch		\$30	\$36	\$43.20	\$

**FAMILY GRAND TOTAL**

\$

Make checks payable to: *Houston Metro Presbytery*. In the memo field write "GA registration."

Mail payment, registration forms and health form to:

PCA GA 2014 • Christ Church Katy • 10818 Gaston Rd., Katy, TX 77494

Email questions about Youth or Children to Kyle Bobas at [Kyle@GraceWoodlands.org](mailto:Kyle@GraceWoodlands.org).

Email questions about Women to Daryl Brister at [Daryl.Brister@gmail.com](mailto:Daryl.Brister@gmail.com).



# Nursery Registration

## Nursery Registration

Infants 6 months through completed first grade—**Registration Deadline: May 9, 2014**  
Check [pcaac.org](http://pcaac.org) to register online.

Nursery activities will be available for children of General Assembly attendees at the George R. Brown Convention Center, Room 370. If you have several nursery age children, the maximum cost will be \$60 per family per day. Below you may register for the hours of care necessary for your family and children. Childcare will be provided in hour increments beginning and ending each half hour. For example, 7:30-8:30 will be considered 1 hour. Please note that picking up a child from the nursery later than the registration time will result in a fee of \$1 per minute payable when you pick up your child.

**Lunch will be served from 12:30-1:30 pm.** If your child is in the nursery during these times, an additional \$5.00 will be assessed to cover the cost of food. Due to allergy safety, please refrain from bringing personal snacks. Our nursery will provide and serve lunch and snacks. Snacks may include cheerios, graham crackers, pretzels and Oreos. Snacks will be served at 9am, 11am, 3pm and 5pm. Infants 6 months to 18 months may bring milk. Other children may bring juice or water (no milk for this age group, please).

### REGISTER EARLY TO SAVE

Please circle the hours your child will be present in Nursery:

#### Tuesday, June 17

7:30-8:30	8:30-9:30	9:30-10:30	10:30-11:30	11:30-12:30					
12:30-1:30*	1:30-2:30	2:30-3:30	3:30-4:30	4:30-5:30					

#### Wednesday, June 18

7:30-8:30	8:30-9:30	9:30-10:30	10:30-11:30	11:30-12:30					
12:30-1:30*	1:30-2:30	2:30-3:30	3:30-4:30	4:30-5:30					

#### Thursday, June 19

7:30-8:30	8:30-9:30	9:30-10:30	10:30-11:30	11:30-12:30					
12:30-1:30*	1:30-2:30	2:30-3:30	3:30-4:30	4:30-5:30					

\*additional \$5 if your child will be attending the lunch hour

GRAND TOTAL → \$

### RELEASE

I give my permission for the General Assembly nursery workers to release my child(ren) to the following persons. I agree that a photo ID will be required by said persons before my child will be released.

All children registered for GA Activities: \_\_\_\_\_

Parent's name (printed): \_\_\_\_\_ Cell phone: (\_\_\_\_) \_\_\_\_\_

Signature of parent: \_\_\_\_\_ Date: \_\_\_\_\_

Release to: \_\_\_\_\_ Relationship: \_\_\_\_\_

Make checks payable to: **Houston Metro Presbytery**. In the memo field write "GA registration."

Mail payment, registration forms and health form to:

PCA GA 2014 • Christ Church Katy • 10818 Gaston Rd., Katy, TX 77494

Email questions about Nursery to Tom Kelley at [KelleyThomas@gmail.com](mailto:KelleyThomas@gmail.com).



# Child Health Form

## Required – Child Health Form (Please photocopy and fill out one sheet for each child)

Child's name \_\_\_\_\_ Age \_\_\_\_\_ Birthday (m/d/y) \_\_\_\_\_

Name of Mother \_\_\_\_\_ Cell# \_\_\_\_\_ (required)

Name of Father \_\_\_\_\_ Cell# \_\_\_\_\_ (required)

Medical Insurance Co. \_\_\_\_\_ Policy# \_\_\_\_\_

Emergency Contact Person \_\_\_\_\_ Cell# \_\_\_\_\_

**ACTIVITY INFORMATION:** CIRCLE the activities for which **this** child has been registered:

Nursery      Tues: All day / AM / PM      Wed: All day / AM / PM      Thurs: All day / AM / PM

### MEDICAL HISTORY

Any pre-existing or present medical condition(s)?

If applicable, name and dosage of medication that must be taken (use back of page if necessary):

Check the following areas of concern for your child, adding necessary comments below

1. Does your child have allergies to: ☐ Medications ☐ Asthma ☐ Food ☐ Insect Bites ☐ Other

Please explain (use back of page if necessary):

2. Does your child require an Epi-pen? ☐ Yes ☐ No Does he/ she know how to use it? ☐ Yes ☐ No

3. Does your child suffer from, or has ever experienced, or is currently being treated for:

☐ Epilepsy/Seizure Disorder ☐ Heart Trouble ☐ Diabetes ☐ Frequently Upset Stomach ☐ Physical Handicap

Please explain (use back of page if necessary):

4. Does your child have any Special Needs? ☐ Yes ☐ No If yes, please explain (use back of page)

5. Date of last Tetanus Shot \_\_\_\_\_

6. Does your child wear glasses or contacts? ☐ Yes ☐ No

7. Does your child know how to swim? ☐ Yes ☐ No

8. Please list and explain any major illnesses during the past year (use back of page if necessary).

9. Should this child's activities be restricted for any reason? ☐ Yes ☐ No If yes, please explain (use back of page).

*I hereby authorize any licensed physician, emergency medical technician, hospital, or other medical/ health care facility to treat the minor named herein for the purpose of attempting to treat or relieve any injuries received by said minor. I authorize any such Medical Provider to perform all procedures deemed medically advisable in attempting to treat or relieve any such injuries. I consent to the administration of anesthesia as deemed advisable. I realize and appreciate that there is a possibility of complications and unforeseen consequences in any medical treatment, and I assume any such risk for and on behalf of myself and said minor.*

Parent's signature \_\_\_\_\_ Date \_\_\_\_\_

Physician's name \_\_\_\_\_ Physician's phone \_\_\_\_\_

Mail this completed form to: PCA GA 2014 • Christ Church Katy • 10818 Gaston Rd., Katy, TX 77494



# Child Permission and Release Form

## Required – Child Permission and Release Form

*(Please photocopy and fill out one sheet for each child)*

My child has permission to participate in all of the activities for his/her age-group that are scheduled for the 42nd General Assembly in Houston, TX. In the event my child becomes ill or is injured while under the supervision of the Nursery, Elementary and Youth staff, I approve the appropriate authorities taking the following actions:

1. Contact the parent or legal guardian and follow his/her instructions.
2. In the event of an emergency, when neither parent nor guardian can be reached immediately, the General Assembly Host Committee or authorities of the Presbyterian Church in America are authorized to use their best judgment in contacting a physician or other health care provider and to authorize the provision of necessary medical, surgical or other care.
3. In the event of such an emergency, I also waive any rights to privacy of any medical information related to the emergency, in order that the appropriate care might be obtained.

In consideration of the General Assembly Host Committee, Houston Metro Presbytery, and the Presbyterian Church in America (A Corporation) making available the 42nd General Assembly Nursery/Pre-school, Elementary and Jr./Sr. High Activities, I hereby waive, release and discharge its agents, volunteers and employees from any and all claims and liability of any kind or nature. We have read the above and understand this release. Furthermore, in the event of an emergency, said care providers have our permission to administer first aid or obtain emergency medical treatment in our child(ren)'s best interest. We agree to pay all expenses incurred due to an emergency involving our child(ren).

**I understand this is a Release and with that knowledge, I voluntarily sign it.**

First Name \_\_\_\_\_ Last Name \_\_\_\_\_

Signature \_\_\_\_\_ Date \_\_\_\_\_

### Emergency Information:

Home Phone \_\_\_\_\_ Cell Phone(s) \_\_\_\_\_

Insurance Company \_\_\_\_\_

Policy Number \_\_\_\_\_

Name of Primary Policy Holder \_\_\_\_\_

### Location During GA 2014:

Hotel Name \_\_\_\_\_ Hotel Phone \_\_\_\_\_

### Provide names of children and circle program each is attending:

N = Nursery

E = (Elementary) Grades 2-6

Y = (Youth) Grades 7-12

\_\_\_\_\_ N E Y \_\_\_\_\_ N E Y

\_\_\_\_\_ N E Y \_\_\_\_\_ N E Y

\_\_\_\_\_ N E Y \_\_\_\_\_ N E Y

Mail this completed form to: PCA GA 2014 • Christ Church Katy • 10818 Gaston Rd., Katy, TX 77494



STRONG IN SCIENCE • STRONG IN FAITH

# UNLOCKING THE MYSTERIES OF GENESIS

**Announcing ICR's Groundbreaking, 12-Part DVD Series on the  
Science of Creation**

## THE PROBLEM

Today's youth are exposed to overwhelming secular influences. Their questions about creation often go unanswered and many walk away from their faith.

## THE ANSWER

*Unlocking the Mysteries of Genesis* presents new scientific evidence *confirming* the truths found in Genesis and *dispelling* the myths about creation and evolution. Designed to engage this generation with amazing visuals and solid science, this innovative series equips the viewer with answers and tools for affirming and defending the faith.

## UNLOCKING THE MYSTERIES OF GENESIS

### FEATURES:

- » Interviews with leading experts
- » Insights from cutting-edge research
- » Dynamic host
- » Creative animation
- » Stunning locations and visuals
- » Compelling biblical truths



**[www.UnlockingTheMysteriesOfGenesis.org](http://www.UnlockingTheMysteriesOfGenesis.org)**



## Popular Titles from Crown & Covenant Publications



*The Secret Thoughts of an Unlikely Convert*  
(Expanded edition)

*Understanding Biblical Doctrine*

**20% off**  
your entire online order  
Use coupon code: PCAGA14  
No other discounts/offers apply

**Crown &  
Covenant**  
PUBLICATIONS

[crownandcovenant.com](http://crownandcovenant.com) • 412-241-0436

## Equipping Leaders

INTERNATIONAL, INC.

*Equipping leaders to impact their world*

Helping Churches fulfill their mission and vision to impact the world—through partnerships focused on leadership development where the Church is growing the fastest—in the majority world.

Training leaders who train leaders multiplies investment and impact.

**Together we can equip families, Church leaders, Christian educators, Christian businessmen and women to bring Gospel Reformation movements to majority world cultures.**

352 394 5180; [dmountain@gmail.com](mailto:dmountain@gmail.com)

Join our team of over 45 PCA partnering churches, 30+ volunteer instructors.

[EquippingLeadersInternational.org](http://EquippingLeadersInternational.org)

What if Outreach was **answering**  
your community's pleas for help?

**HOME  
REPAIRS  
MINISTRIES**

[www.homerepairs.org/church-resources](http://www.homerepairs.org/church-resources)

disabled single moms widows elderly veterans low-income nonprofits

What if you could help **struggling homeowners in your church?**

What if someone **provided the information to start your own home repairs team** to serve them?

# Check out the AC online!

[www.pcaac.org](http://www.pcaac.org)



## NEW AND UPDATED TOOLS

- New Mapping PCA Church Directory
- BCO and Westminster Standards
- Presbytery Information
- Pastor Search
- Online Giving to the AC



If you long to know the mind of God,  
you must learn to use your own.



If you're looking for truth that can transform your life and change the world, devote yourself to diligent, disciplined study of God's Word. Because a faith that's truly mature requires a mind that's well-informed.

*A mind for truth. A heart for God.®*

ATLANTA | CHARLOTTE | HOUSTON | JACKSON | MEMPHIS | ORLANDO | WASHINGTON DC | GLOBAL



REFORMED THEOLOGICAL  
SEMINARY



[www.rts.edu](http://www.rts.edu)





## FREE TO EVERY MEMBER

Find out how every member of your church  
can receive the PCA's official magazine free.

Just call 678-825-1000.

Begin your own subscription now at [byfaithonline.com/subscribe](http://byfaithonline.com/subscribe).



Manifesting the life-changing gospel of Christ in Word and Deed  
Empowering the PCA to respond to disasters in their communities  
Assisting those affected by disasters through ministries of mercy  
(Please visit our booth in the exhibit hall during GA for a special gift!)

**mna disaster response**



PCA/MNA 1700 N. Brown Road, Suite 101 Lawrenceville, GA 30043-8143  
Phone 678-294-3012  
[www.pcamna.org/disaster](http://www.pcamna.org/disaster)

# REFORMED UNIVERSITY FELLOWSHIP

Reaching the Nations  
on American Campuses



INTERNATIONAL



Reaching Students  
Around the World



GLOBAL



ON 140 CAMPUSES ACROSS THE NATION - AND NOW THE WORLD

1700 North Brown Road, Suite 104, Lawrenceville, GA 30043 | 678-825-1070 | [www.ruf.org](http://www.ruf.org)





# **Expand Your Outreach through Radio, Internet, & Television!**

**▶ AN EFFECTIVE MARKETING & MINISTRY TOOL**



**▶ NO INCREASE TO YOUR STAFF'S WORKLOAD!**



**"Westminster Presbyterian Church of Lancaster, PA finds our biggest draw for visitors and eventual new members via our radio sermon broadcast. Essential to this outreach is a firm trust relationship with technology services from Atlantic Coast Communications. I rely on them implicitly to edit a sermon into the required time format; their people understand our Reformed doctrinal emphasis. In many years of relationship I have found ACC to be 100% reliable and committed to excellence for the glory of God."**

*- Dr. Michael Rogers, Westminster Presbyterian Church (Lancaster, PA)*



**"I have had the privilege of experiencing first hand the blessings of ACC's commitment to produce materials that are excellent, faithful to God's Word, consistent with historic Christianity, and technologically relevant for application and dissemination. Without any hesitation, I would encourage you to take advantage of their services for your ministry."**

*- Dr. Harry Reeder, Briarwood Presbyterian Church (Birmingham, AL)*



**"We have worked with Atlantic Coast Communications for the past several years. I was a 'media skeptic' when we first began our radio outreach, but quickly became convinced of the evangelistic value of the program. We saw rapid returns on our 'investment' - we had first time visitors after the first week we were on the air!"**

*- Pastor Carl Robbins, Woodruff Road Presbyterian Church (Greenville, SC)*

**Please stop by our GA booth and find out how this outreach pays for itself  
or call us at (252) 756 -7220.**

**Web: [www.accradio.com](http://www.accradio.com)**

**Email: [production@accradio.com](mailto:production@accradio.com)**





**DOMESTIC  
PURCHASING**

**INTERNATIONAL  
PURCHASING**

**SHORT-TERM  
LEASING**



**OUR MISSION**

Provide **affordable and reliable** vehicles for Christian ministries and their staff, helping to ensure good stewardship of resources when purchasing a vehicle.

AFFORDABLE  
& RELIABLE  
VEHICLES FOR  
**MINISTRY**

**www.mats.org | 888.776.7211**

# GO TO THE NATIONS.

*WE CAN GET YOU THERE.*

- OPPORTUNITIES AVAILABLE IN **CHINA, MONGOLIA, LAOS, VIETNAM, CAMBODIA, MYANMAR OR NORTH KOREA.**
- TEACH ENGLISH TO UNIVERSITY STUDENTS
- OPEN TO FAMILIES, COUPLES AND SINGLES
- NO LANGUAGE OR TEACHING EXPERIENCE NECESSARY

IN PARTNERSHIP WITH **mtw**

UTP.ELIC.ORG // 888.475.3542

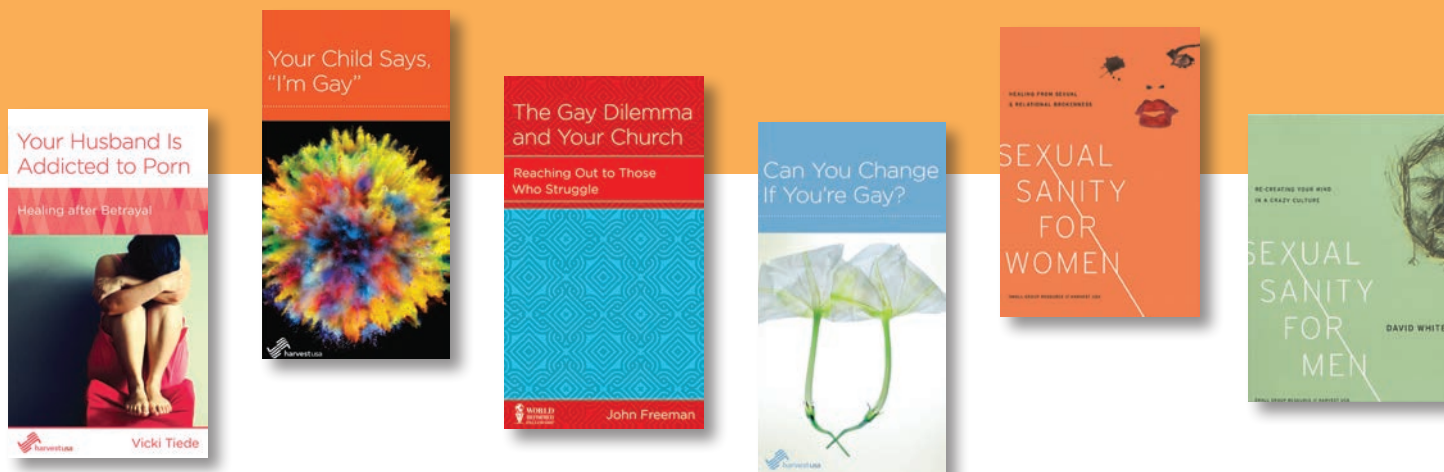
[f/WeAreELIC](#) [@WeAreELIC](#) [@WeAreELIC](#)

**Elic**  
Since 1981





# Spiritual Sanity in a Sexually Insane World



Christians are just as dramatically affected as the rest of society by the everywhere-you-go prevalence of pornography and the “anything goes” sexuality of our culture. The pressure to conform to the culture’s use of sex as a substitute for real relational intimacy, along with the increasing acceptance of homosexuality, is having a devastating impact on men, women and youth—on their relationships, their marriages, their families and especially their relationship with God.

Harvest USA, one of the leading mercy ministries closely associated with the PCA, is experienced and ready to equip your church to help!

Using workshops, seminars and a variety of other resources, Harvest USA will help you educate and equip your church to deal redemptively with pornography, same-sex attraction, promiscuity and sexually-addictive behavior.

**Stop by our  
exhibit booth  
to learn more,  
and visit our website  
([HarvestUSA.org](http://HarvestUSA.org))  
to view our  
resources and the  
educational and  
training seminars  
we offer.**



*Bringing the truth and mercy of Jesus Christ to help men, women and families affected by sexual struggles and sin and to equip churches to minister to sexually-broken people*

**HARVEST USA Philadelphia/National Office • 3901 B Main Street, Suite 304 • Philadelphia, PA 19127 • 215-482-0111**  
**HARVEST USA Mid-South Office • 103 Jordan Drive, Suite 8 • Chattanooga, TN 37421 • 423-266-0434**  
**HARVEST USA Pittsburgh Office • 11743 Frankstown Rd. Suite E • Pittsburgh, PA 15235 • 412-561-7700**

*Deduct Now... Distribute later with an*  
**Advise & Consult Fund®**



Whether you own stocks or mutual funds, support one or more Christian ministries, anticipate events that will result in taxable income, expect an inheritance, make anonymous gifts, or would just like to simplify your giving and reduce administrative time, establishing an Advise & Consult Fund (a donor advised fund) with the PCA Foundation just might be right for you.

**The Advise & Consult Fund:**

- can be funded with cash, stocks, mutual funds and real estate
- provides a current year income tax deduction and eliminates capital gains taxes
- Simplifies your giving—one gift to your fund can be used to make distributions to one or multiple ministries months or even years later
- allows you to set up a schedule of recurring distributions to your favorite ministry



Visit [www.pcafoundation.com](http://www.pcafoundation.com)  
 or Call 800.700.3221

to learn more or to establish an Advise & Consult Fund... *it's quick and easy!*

Fax: 678-825-1041 • Email: [pcaf@pcanet.org](mailto:pcaf@pcanet.org)

PRESBYTERIAN  
 CHURCH IN AMERICA  
 FOUNDATION

© 2014 PCA Foundation, Inc.,  
 Lawrenceville, Georgia 30043

## Smaller Churches Have Special Needs.

Let us help you determine:

- Why you need a Vision Plan developed with congregational input.
- How professional survey research can help determine your Core Values and Gaps in ministry.
- Why the search for a new pastor is *especially* important in a smaller church.

*Serving over 100 smaller churches from South Dakota to Florida, New Hampshire to Mississippi*



**Metokos Ministries**

*... encouragement for small churches*

During the General Assembly, call Don Clements  
 at 540-922-2016 to set up a time to chat.  
 Or, visit us on the web at [www.metokos.org](http://www.metokos.org)

## PCA PASTORS NEEDED IN AFRICA

Help raise up Christian leaders for  
 the African continent by teaching  
 at African Bible Colleges

Come join the marvelous work that God is doing in Africa! Our campuses in Malawi, Uganda, and Liberia have openings for college professors, both short-term and career. Our specific needs include professors of Mass Communication, Christian Education, Bible, and Theology. For more information, please contact us:



African Bible Colleges  
 P.O. Box 103 | Clinton, MS 39060  
 601.922.1962  
[abcadmin@africanbiblecolleges.net](mailto:abcadmin@africanbiblecolleges.net)  
[www.africanbiblecolleges.net](http://www.africanbiblecolleges.net)





Accept donations electronically.

# Is it just a dream?

Or are you ready to make it happen?

## Donors

Have you ever forgotten to bring your tithe check to church on Sunday morning? Electronic Giving Solutions enables you to fulfill your giving commitments.

## Churches and Non-profits

Electronic Giving Solutions is powerful, affordable and able to meet the online donation management needs of organizations of any size.

Electronic  
**GIVING**  
Solutions



## Schools and Daycare

Spend less time worrying about money and more time in the classroom. How, you say? Stewardship Technology makes it affordable.

## HQ and Denominations

Save time and money by creating a financial network that sorts through regional, state, and denominational payments for budgets, assessments, benefits, and more.

Come visit our booth and sign up for an  
ONLINE DEMO.

**StewardshipTechnology.com**

stewardship **technology**

*Helping pastors and their congregations embrace biblical stewardship  
of their time, talent and financial resources*

P.O. Box 987 • Mount Vernon, OH 43050 • 866-604-8880 • [info@EGSNetwork.com](mailto:info@EGSNetwork.com)



Do you want a PhD or Masters degree  
in **Theology** from a **Scottish university**?



**PhD** by research



**Taught Masters** degrees in

***Reformed Theology; Pastoral Theology; Theological Studies***

Visiting tutors include Gerald Bray, Paul Helm, Iain MacRitchie, Dominic Smart

Bursaries/scholarships may be available – please contact us for details



University of the  
Highlands and Islands  
Highland Theological  
College

Oilthigh na Gàidhealtachd  
agus nan Eilean  
Colaiste Dhiadhachd  
na Gàidhealtachd

***Evangelical  
Reformed  
Non-denominational***

Highland Theological College UHI, Dingwall, Scotland IV15 9HA ☎ +44(0)1349 780000 [www.htc.uhi.ac.uk](http://www.htc.uhi.ac.uk)

***A Community of Faith and Scholarship***

# WHAT DO YOU STAND ON?

AT RPTS WE STAND ON SCRIPTURE AS THE  
ULTIMATE AUTHORITY ON ALL THINGS.

**REFORMED PRESBYTERIAN THEOLOGICAL SEMINARY  
PITTSBURGH, PA**

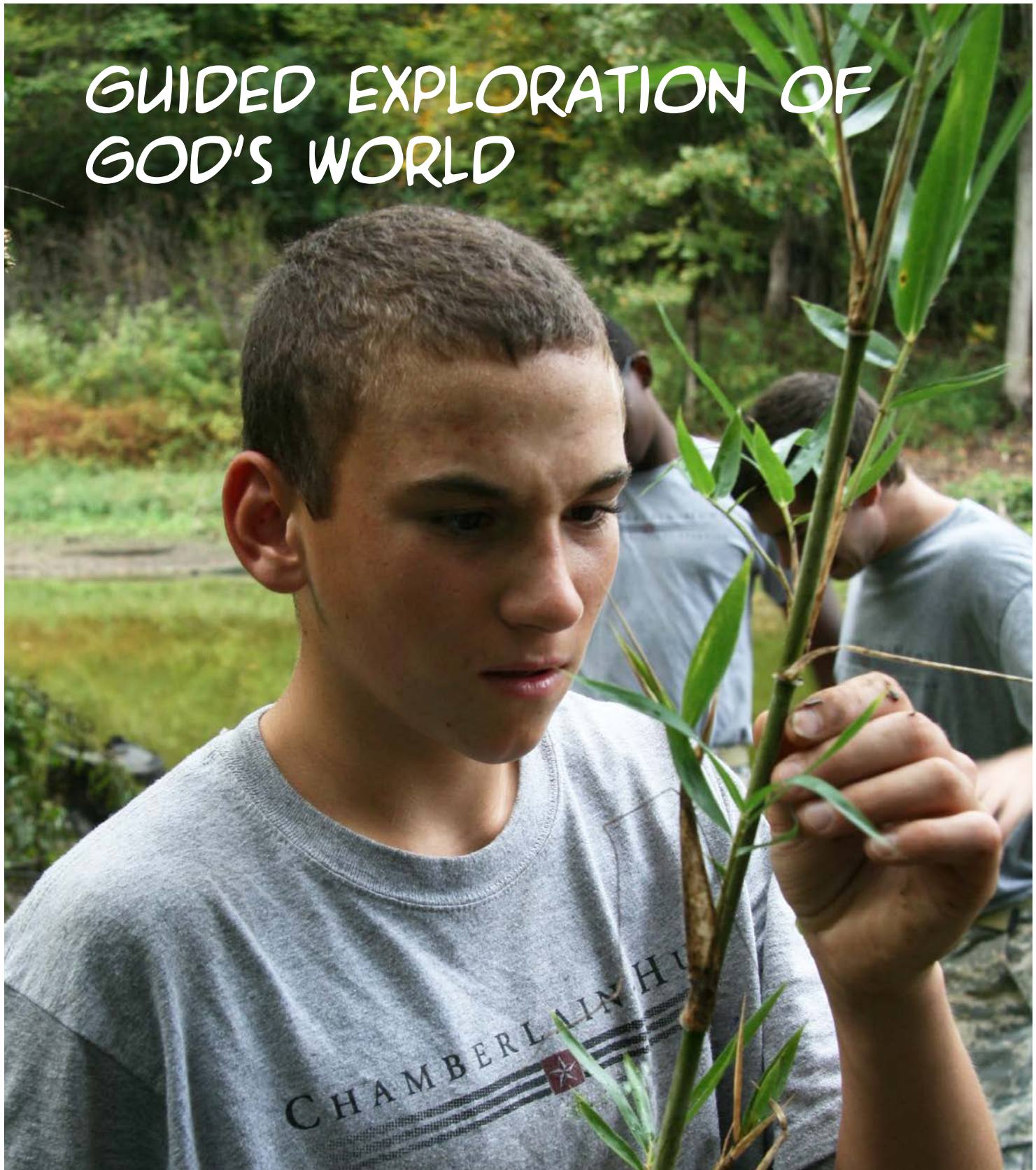
STOP BY OUR BOOTH FOR INFORMATION ON AN ALUMNI AND  
FRIENDS LUNCH THAT WILL BE HELD ON JUNE 19, 2014.  
PLEASE SIGN UP IN ADVANCE.







# GUIDED EXPLORATION OF GOD'S WORLD



Virtual Tour



YouTube

Christian Mentoring | Individualized Learning | Nurturing Family Atmosphere | Life-Skills and Recreation | Service and Excellence







**HOST**



**BUY**



**BLESS**

One tree can reach dozens, hundreds or thousands of people, multiplying the blessing to East African children and their communities. As an O4O Coordinator you give others the opportunity to buy a beautiful product full of meaning, an item that empowers the working poor and provides for vulnerable orphans. The only cost is your time! Do something meaningful this Christmas. Put Up a Tree. Lift Up a Child.



**ORNAMENTS  
4 ORPHANS** ORG

**Ornaments4Orphans.org**

AN INITIATIVE OF PEARL MINISTRIES // [ORNAMENTS@PEARLMINISTRIES.ORG](mailto:ORNAMENTS@PEARLMINISTRIES.ORG) // 205.202.5616



*“What will bring us peace is not recognition, but remembering that God sees, knows and loves us, and that we work, serve and love Him primarily. That we initiate with others because he has done so with us...and at the end of the day, he knows our name.”*

— Andy Lewis, *Senior Minister*  
Mitchell Road PCA, Greenville, SC  
BA 1997, MDiv 2002  
Erskine College & Seminary

Erskine is an evangelical and reformed academic community where rigorous study, biblical fidelity, and rich history combine to create a distinctive seminary experience.



**ERSKINE**  
THEOLOGICAL SEMINARY  
*For Christ and His Church*

For 175 years we've been privileged to equip leaders for service to Christ and His Church. We invite you to learn more about how Erskine can help equip you to lead by serving.

800.770.6936  
[seminary.erskine.edu](http://seminary.erskine.edu)  
[etsadmissions@erskine.edu](mailto:etsadmissions@erskine.edu)

**DUE WEST | COLUMBIA**  
AUGUSTA | CHARLESTON | FLORENCE | GREENVILLE | ONLINE





One of the most common ways to educate international pastors has been to bring them to this country. But the majority do not return home.

There is a better way. Help us bring seminary to them.



**Biblical Education. For the World. For Free.**

For more information email [dev@thirdmill.org](mailto:dev@thirdmill.org) or  
visit our website at [www.thirdmill.org](http://www.thirdmill.org)